

shannoneastman.com



YOU'RE NOT BEING REPLACED BY AI – YOU'RE BEING REVEALED.

Therapy, Coaching, Consulting and AI





As machines become more intelligent, your presence becomes more essential.

We don't need to compete with data, we carry something it never will: attunement, alchemy, and the ability to align mind-body-soul.

Clients are evolving. They arrive with more information, but less integration. AI can offer structure and reflection. You offer meaning, resonance, and relationship.

This is one of the most compelling invitations to become more of what only you can be.





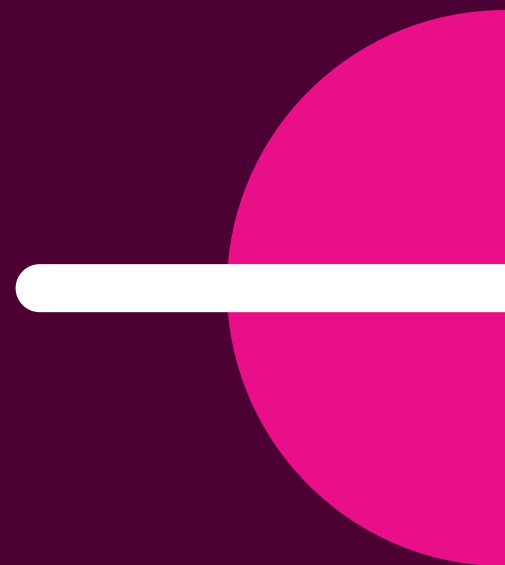
AI is mastering the outer layer:

- ✦ Content
- ✦ Tracking
- ✦ Reflection
- ✦ Repetition

We get to master the inner layer:

- ✦ Coherence
- ✦ Relationship
- ✦ Adaptation
- ✦ Meaning

This shift opens a new kind of freedom — to align who we are with how we work, entering a deeper state of presence, flow, and creative impact, unlike anything we've done before.





In a world flooded with content, your lived clarity becomes currency.

Stepping up beyond the therapy room into:

- Speaking
- Leadership
- Influence
- Experience
- Connection

Imagine this not as a performance but as a transmission of who you've become. An expansion of your essence. We don't need more experts. We always need role models who can ground us in inspiration, alchemy, & alignment.



shannoneastman.com

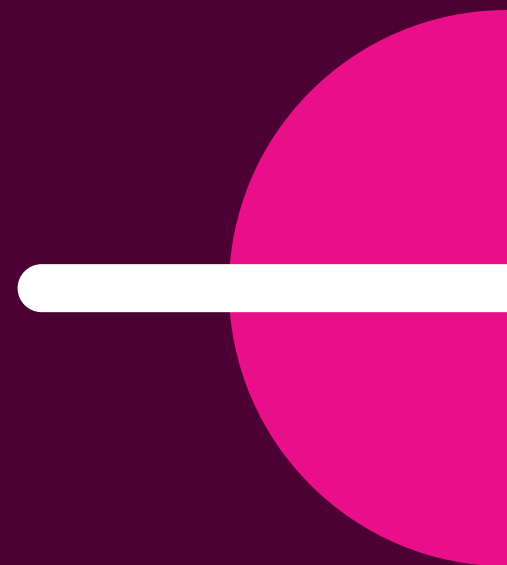


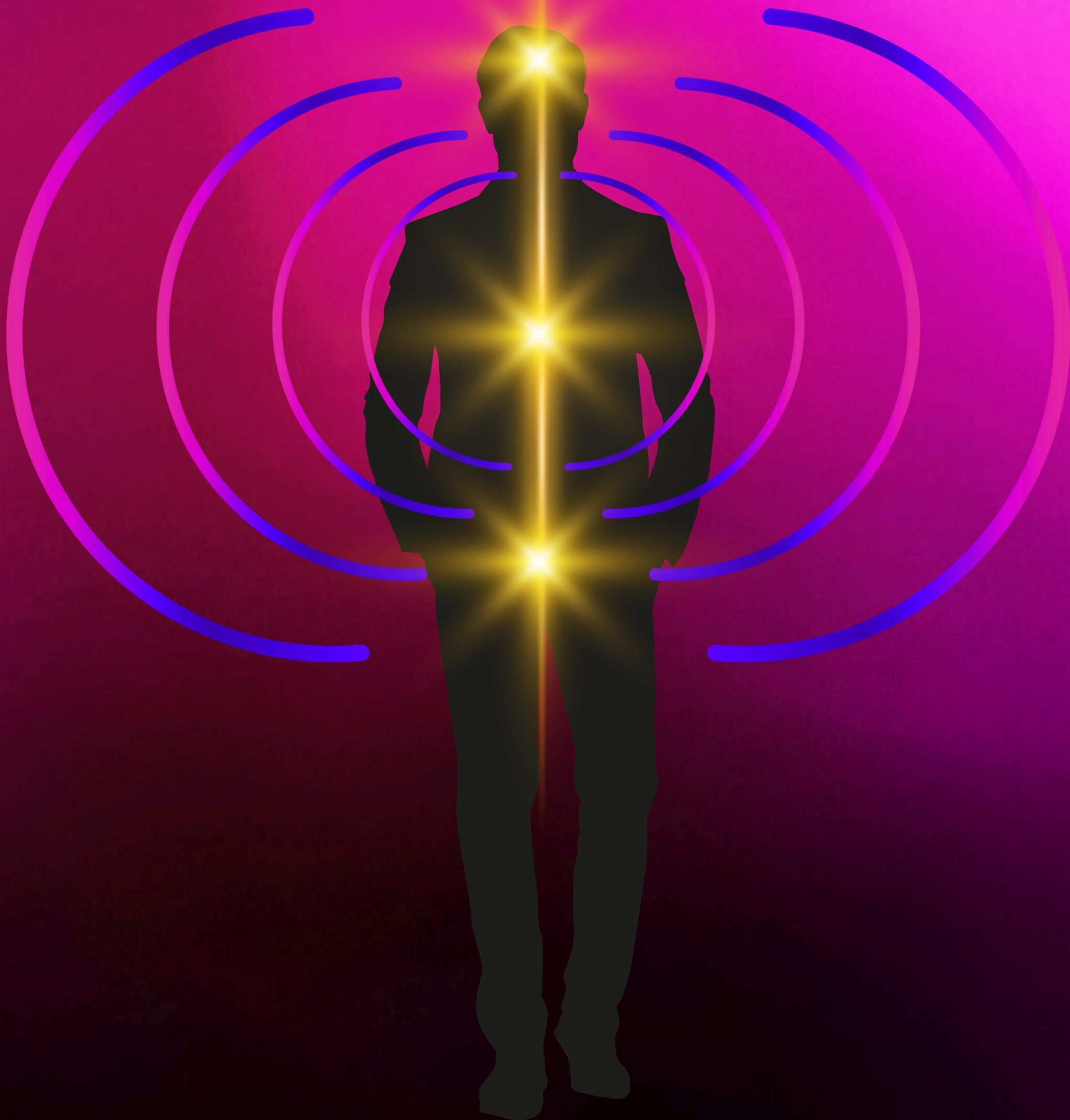
FREE WORKSHOP – LIVE & ONLINE **8th May 2025, 2pm GMT, 9am ET**

Join us for 90-Minutes to get one perspective on this changing space, and why it holds the potential for some of our best work yet.

Details and to RSVP:

shannoneastman.com/ai-workshop





OUR RELEVANCE ISN'T DISAPPEARING. IT'S BECOMING UNDENIABLY CLEAR.

I'm Shannon Eastman, and my meaningful action is entirely inside nervous system first for a quality of life that transcends what any of us can imagine. 💪



NervousSystemEconomy.com



whoturnedthelightson.com (podcast)



shannoneastman.com

